

Boxer 3000

For fluid and gas delivery

The DC motor driven Boxer 3000 diaphragm pump is ideal for pressure or vacuum application where current and reliability are prime requirement. Boxer 3000 pumps are manufactured in non-corrosive engineering materials. The wetted path is metal free. Silicone or EPDM diaphragm and valves allow its trouble free operation even in extremely low temperatures with a wide variety of gasses and liquids. Highest quality Stainless Steel ball bearings on motor shafts and cranks ensure the lowest current consumption with maximal operational life.

The Boxer 3000 is available in dual- or quad-head construction. Each of its pumping heads can be run as a separate entity or combined with the other heads in a series or parallel configuration to match a large variety of applications. This unique construction of the Boxer 3000 series pump allows it to be configured for the simultaneous delivery of gas, in two of its heads, and liquid on the other two heads.

Boxer 3000 pumps are oil free. The absence of any sliding seals or ferrous components in the fluid path of the pump, guarantees a contamination free transfer of media – whether liquid or gas.

The fluid version is self priming and can run dry without any adverse effect.

Exit and entry port plate can be rotated and fixed in four different orientations.

Motor	24VDC or 12VDC permanent magnet
Typical current free flow gas (20°C)	350mA
1.7Bar pressure gas (20°C)	450mA
Min. operating temp gas	-20°C
Materials in flow path	Silicone or EPDM GF Polypropylene
Weight	Dual Head – 420g Quad head – 510g
Hose connection	Ø5.5-8.5mm
Accessories	Vibration mounts/dust filters with condensation traps/noise dampers, hoseclips

Pump types		
Boxer 3102	Dual head gas pump	12v or 24v
Boxer 3104	Quad head gas pump	12v or 24v
Boxer 3202	Dual head fluid pump	12v
Boxer 3204	Quad head fluid pump	12v
Boxer 3304	Dual head gas/ dual head fluid pump	12v

Rear shaft extension available in dual head pumps.

Performance characteristics for gas pumps
(operated at the nominal voltage)

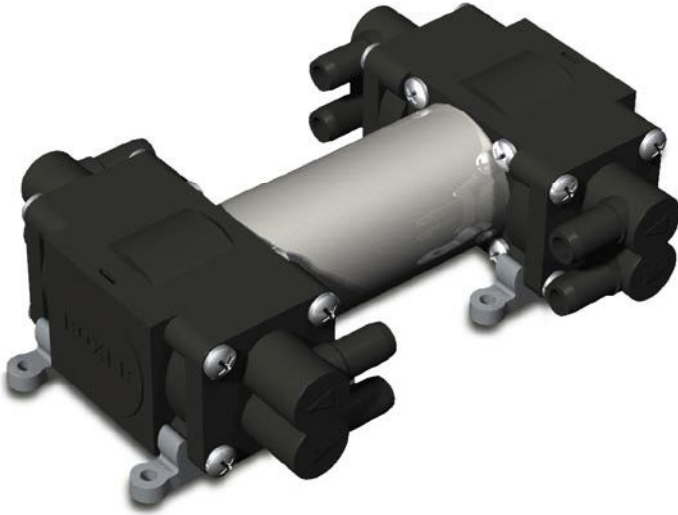
	Boxer 3102	Boxer 3104
Max free flow suction	15l/min Gas	30l/min Gas
Max pressure:		
Parallel configuration	800mbar	800mbar
Series configuration	2Bar	2Bar
Max vacuum:		
Parallel configuration	500mbar	500mbar
Series configuration	700mbar	700mbar

Performance characteristics for liquid pumps
(operated at half the nominal voltage –
distilled water at 20°C)

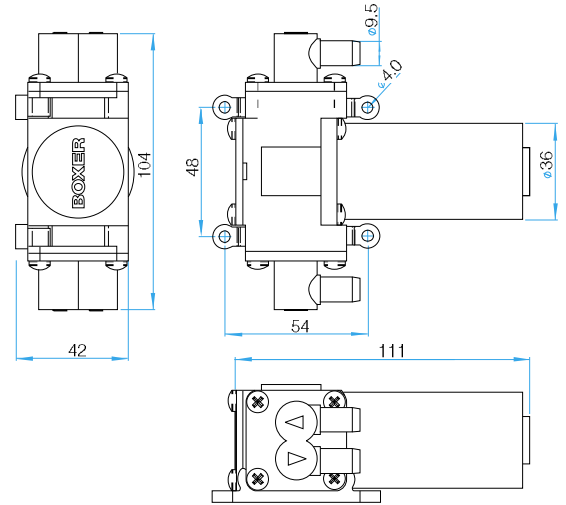
	Boxer 3202	Boxer 3204
Max free flow – parallel	2.4l/min	4.5l/min
Max free flow – series	1.5l/min	3.0l/min
Max system pressure	2Bar	2Bar
Suction height – parallel	3mH ₂ O	3mH ₂ O
Suction height – series	5mH ₂ O	5mH ₂ O

Performance will vary according to valve and diaphragm materials.

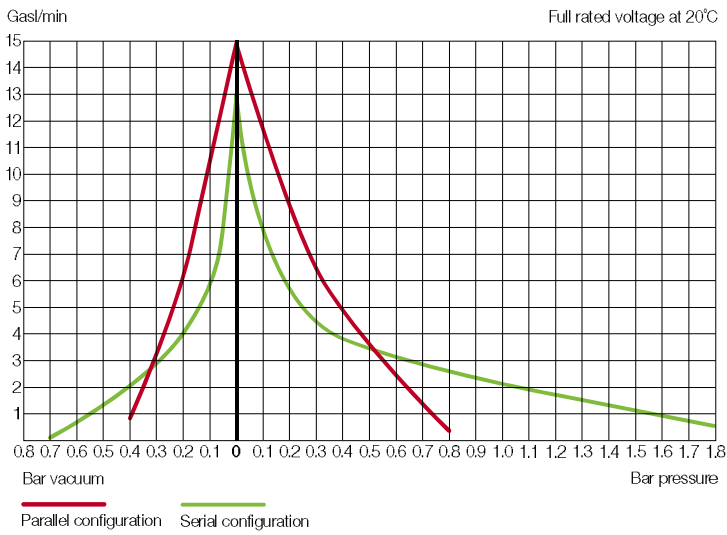




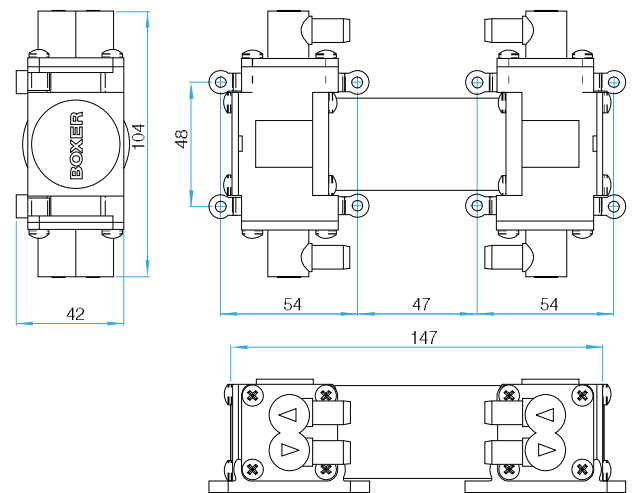
Boxer 3102 dual-head



Boxer 3102 performance chart
Showing dual-head output



Boxer 3104 quad-head



Boxer3202 performance chart
Dual-head output

